

# INTRODUCING BRAND NEW MANTSINEN 60



## THE STRONGEST LINK IN THE GLOBAL LOGISTICS CHAIN

Mantsinen provides more efficiency, speed and capacity for our customers in global logistics chain, operating with heavy and basic industry raw materials and semi-finished products. We are the hands-on frontrunner in material handling.

## MANTSINEN GROUP LTD OY

Välikankaantie 3, 80400 Ylämylly, Finland | [www.mantsinen.com](http://www.mantsinen.com)



The carbon emission of this printed matter is evaluated according to ClimateCalc.  
www.climatecalc.eu  
Cert. no. CC-000084/F1



# MANTSINEN 60 DEFAULT SETTING: BEAST MODE

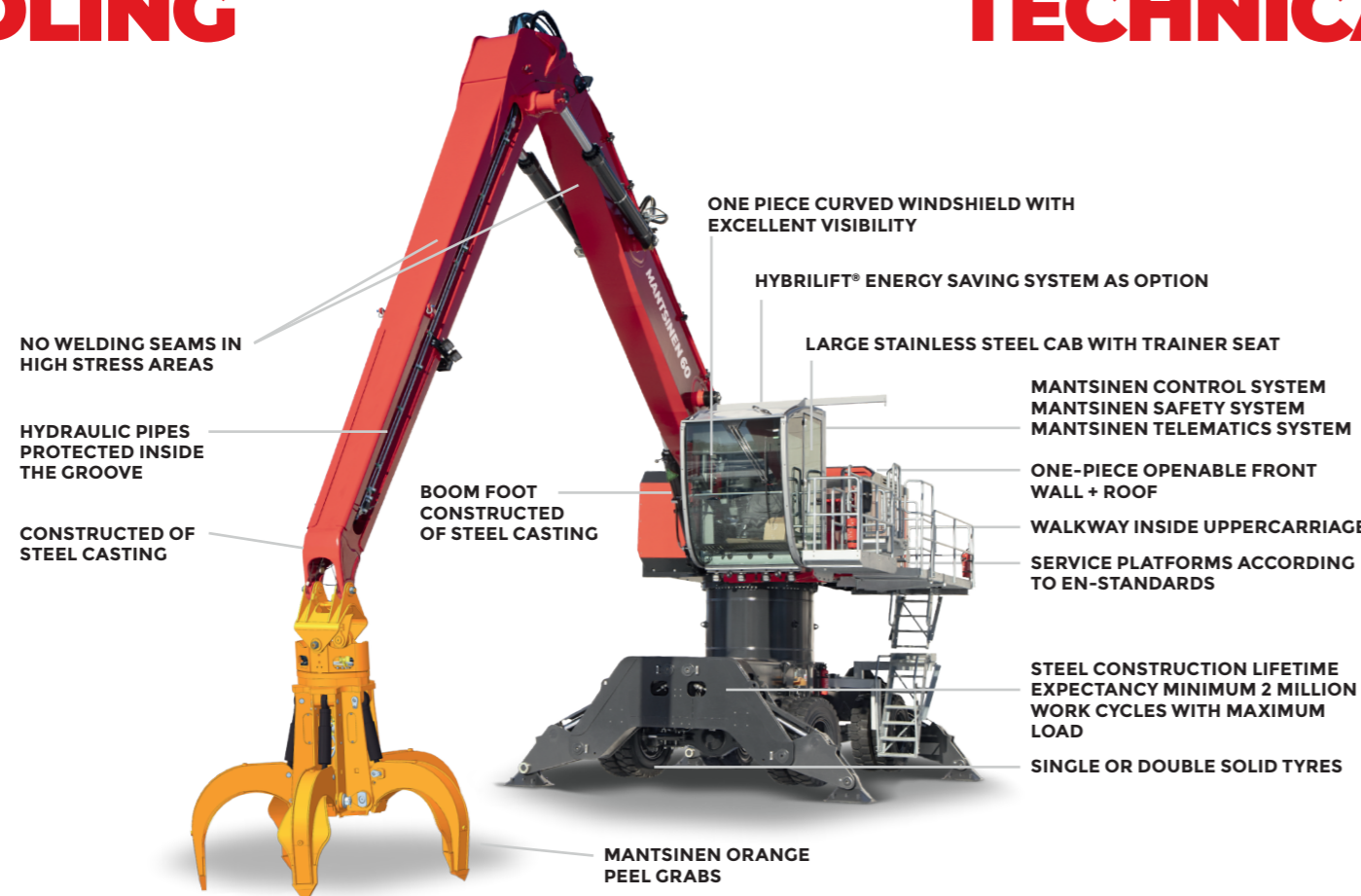


# SCRAP HANDLING

Scrap is known to be one the toughest materials in industrial material handling. Requiring both sturdiness and strength, scrap handling sets huge challenges for the machinery. Consequently, the Mantsinen 60 meets these tough requirements, providing you with unprecedented efficiency.

Equipped with original Mantsinen orange peel grabs, with 4 to 5 tines, closed, semi-open or open structure, and with a typical capacity of 1,5 cubic meters, the Mantsinen 60 is perfected for a variety of scrap handling needs.

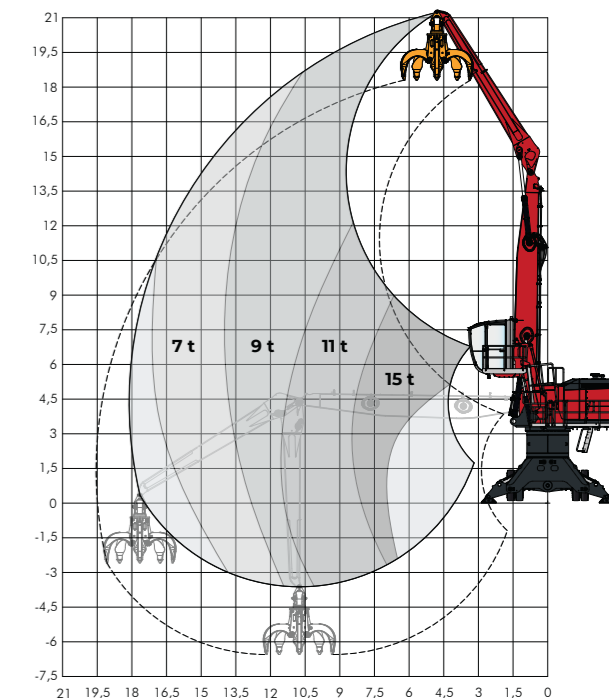
Combining agility, intelligence and strength, the Mantsinen 60 comes equipped with the **Mantsinen Telematics System (MTS)**, **Mantsinen Safety System (MSS)** and **Mantsinen Control System (MCS)** as standard.



# TECHNICAL SPECIFICATION

<b>TOTAL WEIGHT</b>	65 to 80 tons according to configuration
<b>HORIZONTAL REACH</b>	16-20,5 m
<b>ENGINE</b>	Diesel Volvo TAD 882 VE 210 kW, Stage V, (EU) Diesel Volvo TAD 872 VE 210 kW, Tier 4f, (USA) Diesel Volvo TAD 852 VE 210kW, Stage IIIA
<b>WORKING LIGHTS</b>	LED, 4 pcs underneath of cabin and 4 pcs at stick
<b>MAX OPERATION PRESSURE</b>	350 bar
<b>OIL FLOW</b>	2 x 330 l/min max
<b>SLEWING RING</b>	Diameter 1 940 mm
<b>SWING TORQUE</b>	124 kNm
<b>SWING SPEED</b>	7,0 rpm max
<b>HYDRAULIC OIL TANK</b>	650 l
<b>FUEL TANK</b>	500 l
<b>ENGINE OIL</b>	27 l
<b>ADBLUE TANK</b>	45 l

<b>WHEELED UNDERCARRIAGE</b>	
Height	1,7 m
Wheelbase	3 500 mm
Wheel gauge	2 830 mm
Tyres	8x 12.00-24 solid rubber tyres
Drive speed	0 - 10 km/h
<b>WHEELED UNDERCARRIAGE, HEAVY DUTY</b>	
Heights	1,9 m. 3,0 / 4,0 / 5,0 m with pylon
Wheelbase	3 940 mm
Wheel gauge	2 830 mm
Tyres	8x 14.00-24 solid rubber tyres
Drive speed	0 - 10 km/h
<b>UNDERCARRIAGE 60R WITH STANDARD TRACKS</b>	
Heights	1,7 as standard. 2,8 / 3,8 / 4,8 m with pylon
Track shoes	670 mm flat shoes / 550 mm three grouser shoes
<b>UNDERCARRIAGE 60R WITH PROLOGNED HEAVY DUTY TRACKS</b>	
Heights	1,8 as standard. 2,9 / 3,9 / 4,9 m with pylon
Track shoes	670 / 850 mm flat shoes / 550 mm three grouser shoes



Example lifting capacity range with 10 m straight boom and 8 m stick. Ask for your optimal configuration.